



# Hurricane Preparedness

Southern Association of Marine  
Laboratories (SAML)

**EckerdCollege**  
on FLORIDA'S GULF COAST

**THINKOUTSIDE**

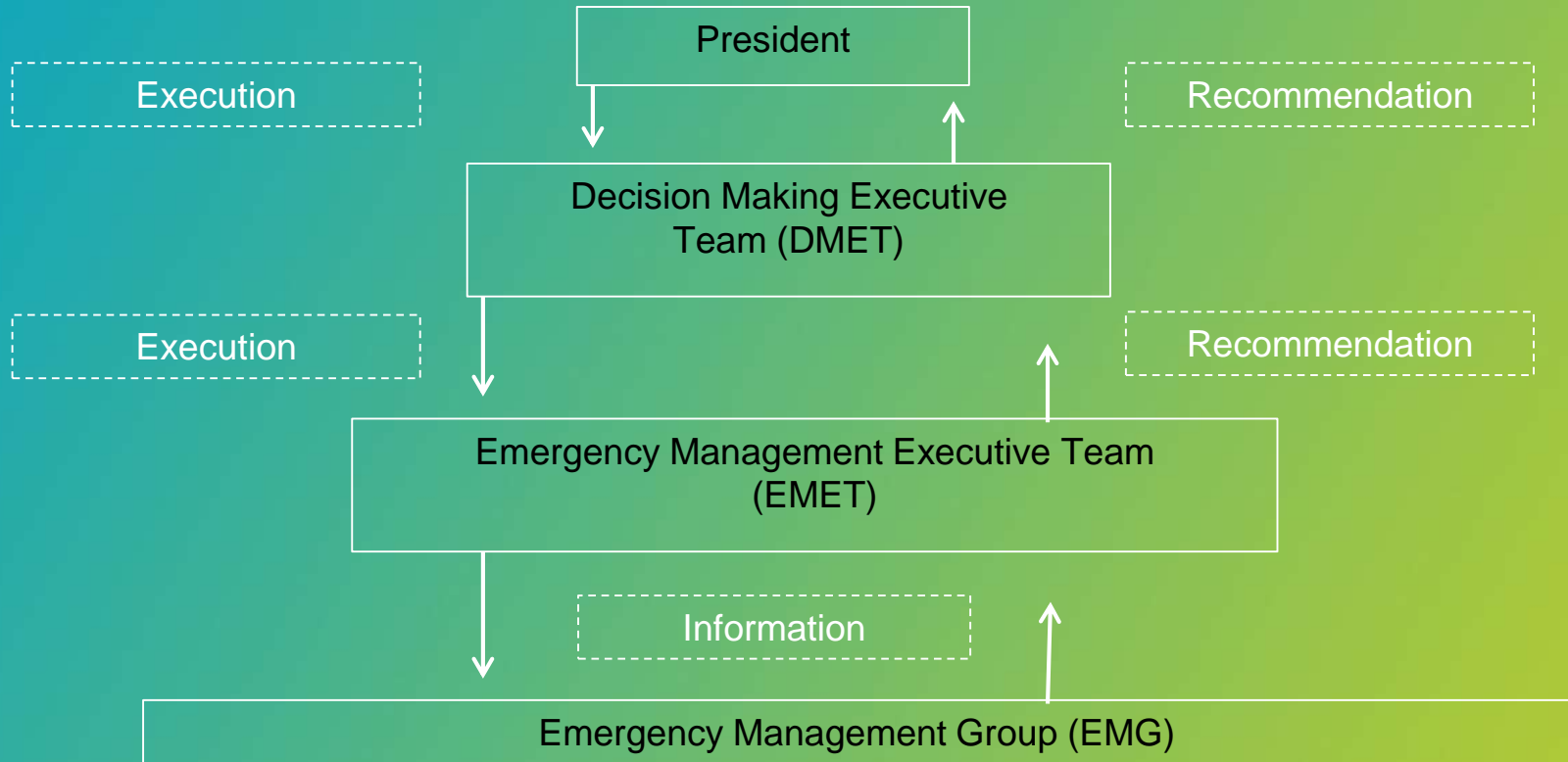
# It has been a while

- Last closures
  - Last closures Wilma (2005) and Fay (2008)
  - Closure cancelled for Isaac (2012)
- Irma's Impacts
  - 4 hours of sustained winds over 100 mph
  - \$340,000 in damages



Photo courtesy of NOAA

# Structure for Preparedness



# External Connections Matter

- National Weather Service
- Pinellas County Emergency Management
- St. Petersburg Emergency Management
- Other Institutions



# Preparing a Department

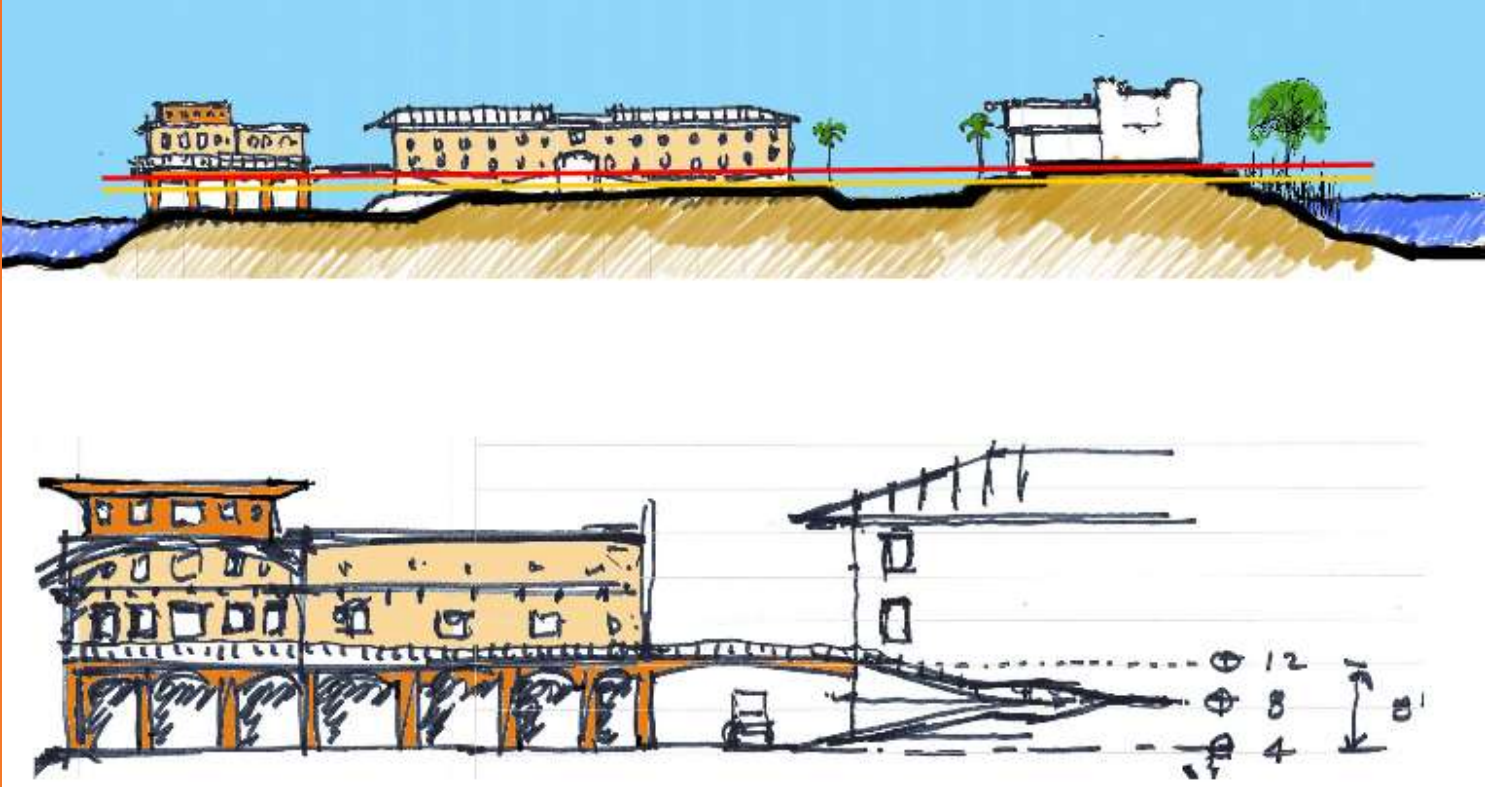
- Determine what is critical – create redundancies that are not reliant on technology
- Non-critical but important – create steps to protect and mitigate damages
- Employee's home preparation is just as important

# Insurance & Recovery

- Be aware of your policy and what it covers
  - Gap coverage
- FEMA
- More than just repair – it is about making things stronger



# Questions



From the Eckerd College Campus Master Plan, 2002